

Brackets & Tubes

Precision engineered and manufactured by G&H® in the U.S.A.



ORTHODONTICS®

Quality Manufacturing. Exceptional Service.

The difference behind G&H® BRACKETS

By controlling the entire process from raw material sourcing to packaging & delivery, we assure quality manufacturing & exceptional service.



Ceramic (CIM) Feedstock
Ceramic Brackets

1

We start with the highest quality raw materials –

G&H uses proprietary feedstock formulations with only the highest quality materials to ensure consistent quality.



Metal (MIM) Feedstock
Metal Brackets

4



"Sintered"
metal bracket



Metal brackets are tumbled after sintering to remove any burrs and to smooth contours.

5



The contoured mesh pad base is tack-welded by hand to metal bracket.



"Seeing to every detail to ensure your success"



Quality management system -
ISO 13485:2003 & EN ISO 13485:2012

Next, we precision manufacture –

2



The feedstock is compressed under high pressure in the injection molding machine. This creates what is known as a "green" bracket.

"Green"
Metal Bracket



The "green" bracket is 20% larger than the finished bracket.

"Green"
Ceramic Bracket



3



Ceramic brackets are complete after sintering as the base and bracket are formed as a single piece during the injection molding process. (Color-coding is applied after sintering).



6



Tack-welded metal brackets receive solder in preparation for final brazing.

7



Metal brackets travel through a brazing furnace to complete the soldering process.

8



Brackets go through a final finishing step giving them a smooth polished finish.

9



Then we quality check –

All brackets are inspected for quality assurance throughout the manufacturing process and prior to packaging.

10



To produce –

G&H® brackets that work seamlessly with our G&H® wires and elastomers.

miniPrevail®

BRACKET SYSTEM

A POWERFUL, COMFORTABLE BRACKET SYSTEM

A mini twin bracket system with all the benefits of a full twin

miniPrevail® brackets are constructed of a specialized micro-grain surgical stainless steel metal injection molding (MIM) powder, for an inherently stronger, and more dimensionally accurate bracket.



See our video!

GHOrthodontics.com

METAL INJECTION MOLDED MIM**

ensures exact tolerances and strength of design

FULL ROTATIONAL CONTROL

due to the mini twin design

UNIQUE, OFFSET SLOT

allows contact under tie wing only for reduced friction and full control

LOW PROFILE

– reduces occlusal interference
– enhances comfort

INCREASED TIE WING AREA

to facilitate ligation

COMPOUND CONTOUR BASE

for increased bond strength and precise bracket placement

17-4 SURGICAL-GRADE STAINLESS STEEL

for greater strength

CENTER SCRIBE LINE

aligns with long axis for accurate placement

COLOR ENHANCED I.D.

for easy bracket selection

ROUNDED FACIAL CONTOURS

for patient comfort

CHAMFERED SLOT ENTRANCE

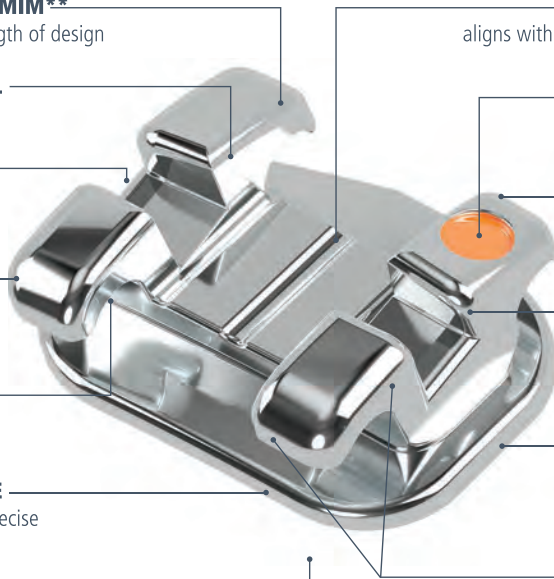
promotes easier and more rapid archwire placement

TORQUE IN BASE

for level slot lineup and improved finishing

RHOMBOIDAL SHAPE

Mesiodistal sides line up with the long axis and incisogingival sides line up with the occlusal plane



80 GAUGE ANATOMICAL BONDING BASE

matches the anatomical curvature of the tooth for maximum contact and a strong, consistent bond

miniPrevail® is available in:

Slot size: .022 or .018

Prescription: Roth & MBT

Hooks: 3's only or 3's, 4's, 5's



Also available in Roth* V-Slot



Actual patient wearing G&H miniPrevail® brackets.

*G&H prescriptions are not implied to be an exact version of any other system, nor do we claim any endorsement by the doctor.

G&H® Brackets **Clinical Results**

miniPrevail® BRACKET SYSTEM **CASE STUDY**



“miniPrevail brackets are high-quality twin brackets. The base and scribe lines make for easy bracket placement. The tie wings allow for easy tie-ins with multiple ligatures if needed, but are strong and comfortable for the patient.”

—Howard Fine, D.M.D., M.M.Sc.

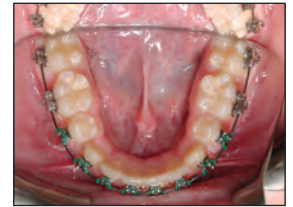
Pre-Treatment

3/21/2014 – 11 yrs 4 mos



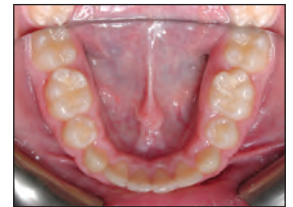
Mid-Treatment

1/28/2015 – 12 yrs 2 mos



Post-Treatment

8/31/2015 – 12 yrs 9 mos



VAPOR™

CERAMIC
BRACKET SYSTEM

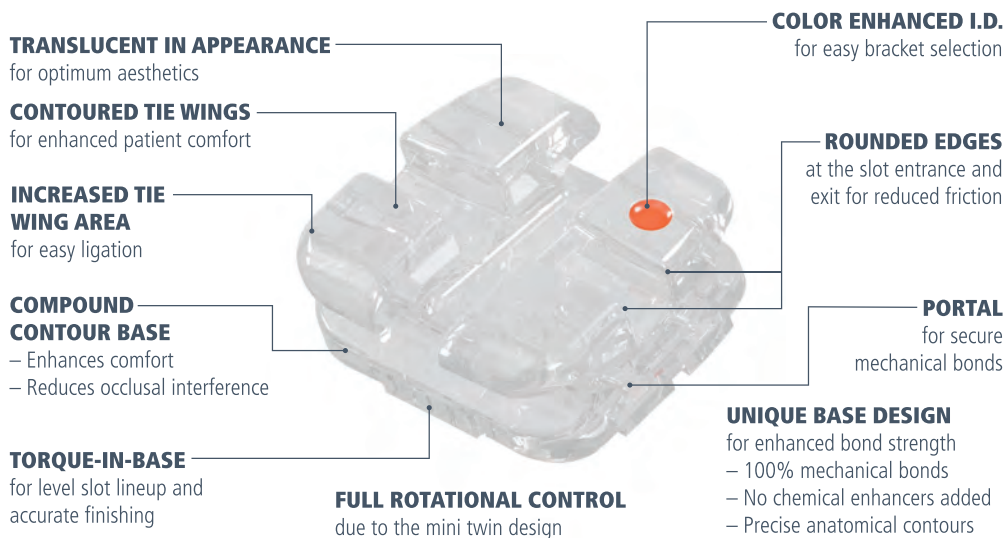
A NEARLY INVISIBLE POLYCRYSTALLINE CERAMIC INJECTION MOLDED BRACKET

Vapor brackets are constructed of proprietary ceramic injection molding materials to ensure a stronger, and more dimensionally accurate bracket. Vapor's brilliant translucency presents a totally aesthetic appearance throughout treatment. The unique bonding base design ensures superior performance and easy, conventional debonding. The unique "portals" in the base allow adhesive to circulate through the base, creating a secure mechanical bond.



See our
video!

GHOrthodontics.com



Vapor's Revolutionary "Portal" Bonding Base



Vapor™ is available in:

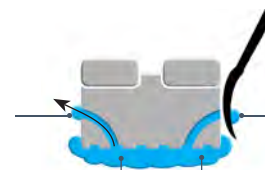
Slot size: .022 or .018

Prescription: Roth & MBT

Hooks: 3's or optional on 4's, 5's



ADHESIVE EXITS
through portal openings
on the mesiodistal sides
of the bracket



ADHESIVE POLYMERIZES IN THE PORTALS
and on the base during curing
for unprecedented secure
mechanical bonds

Buccal Tubes

VIPER™ LOW PROFILE BUCCAL TUBES

G&H has meticulously engineered a full complement of weldable and bondable, convertible and non-convertible tubes. Metal injection-molded surgical-grade stainless steel (MIM) for strength and dimensional accuracy.

Single Non-Convertible

4.2MM MESIAL/DISTAL DIMENSION

for full rotational control

LOW PROFILE HOOK

allows easy engagement and patient comfort

FULL-FUNNELED ENTRANCE

helps guide wire into buccal tube

TORQUE IN BASE

or easy alignment with optimal functional occlusion and case finishing



PERMANENT COLOR ENHANCED I.D.

designed with specific geometric indents for each prescription, color-coded on the facial surface to help identify molar quadrants and assist with final positioning

DISTAL NOTCH

provides additional anchorage for ligation and tieback of auxiliaries

OCCUSAL/GINGIVAL POSITIONING GUIDES

allow for easy placement at the posterior region and assist with major adjustments prior to curing the adhesive

COMPOUND CONTOUR 80 GAUGE MESH BASE

anatomically conforms to the tooth and provides maximum bond strength

Single Convertible

INTEGRAL CAP

secure yet removable



Double Convertible



Viper™ is available in:
Convertible & Non-Convertible
Bondable or Weldable Base Options
Slot size: .022 or .018
Prescription: Roth & MBT
Hooks: 3's or optional on 4's, 5's